

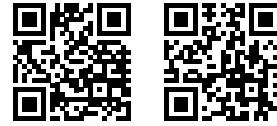


# ÇANAKKALE INDUSTRIAL INVESTMENT GUIDE





## Invest in Çanakkale



[www.investincanakkale.com](http://www.investincanakkale.com)  
[www.gmka.gov.tr](http://www.gmka.gov.tr)

### Study in Brief

With its emerging economy, Turkey is becoming one of the most vibrant hubs in the global economy, being able to offer many advantages to investors thanks to its geographical position, natural resources and qualified labor force. Based on its emerging economy and the benefits offered to investors, Turkey now ranks among the most popular countries in which to invest among global-scaled enterprises.

Çanakkale is known for its ability to host sustainable eco-friendly investments, and for the many advantages on offer, such as a qualified labor force, land-air-sea transportation, its natural resources and its strategic location close to industrial hubs. The aim of this study is to promote the existing investment atmosphere in Çanakkale so as to increase its share of investments in Turkey, which has been a center of attraction in this regard.

In the Industrial Investment Guide, all data related to the investment environment are evaluated considering the private sector sensitivities. This guide addresses in detail the industrial sector investors, explaining the advantages to be offered in return for investments in Çanakkale, which are examined under relevant titles.

It also addresses the existing conditions of the industry in the province and reviewed the prominent sub-sectors. The guide outlines the incentives that can be utilized in the investments to be made to the industrial sector. In addition to the Industrial Investment Guide, other provincial investment guidelines are presented, bringing together information for agriculture and livestock, tourism and energy sector investors.

The South Marmara Development Agency is able to offer support services to investors thanks to its technical infrastructure and expert staff, in addition to this guide, in order to promote the investment atmosphere in the region. It can also be considered a solution partner in terms of the investments to be made in Çanakkale. We hope that this guide that we have prepared for you considering private sector sensitivities will be helpful to you, distinguished investors, and we encourage you to take advantage of the comprehensive support services provided by the Investment Support Office while work on your investments.

### SOUTH MARMARA DEVELOPMENT AGENCY

## Industry in Çanakkale Becomes Stronger Gradually

Çanakkale enables eco-friendly investments by its proximity to metropolitan provinces such as İstanbul, Bursa and İzmir; by hosting specialized centers such as Technoparks where R&D studies can be conducted; by its education infrastructure that enables university-industry collaboration; and by its significant incentive and support components that offer remarkable advantages to the enterprises



## Appropriate Infrastructure for Industrial Investments

Çanakkale is located on transportation networks connecting Asia and Europe; offering various opportunities for the investors with developing road, sea and air transportation infrastructure.

As soon as the construction for the 1915 Çanakkale Strait Suspension Bridge and the connecting link roads finish, Çanakkale will be much closer to major finance and production centers such as İstanbul, İzmir and Bursa.

The province has a qualified manpower needed by all kinds of industrial investment.

There are 2 organized industrial zones, 1 specialized industrial zone, 7 small industrial area and 1 small industrial area under construction.





## Industrial Investment at All Scales

Some 70 percent of enterprises in Çanakkale are micro scaled, 24 percent are small scaled, 4 percent are medium scaled and 2 percent are large scaled.

70%  
Micro  
Scaled

24%  
Small  
Scaled

4%  
Medium  
Scaled

2%  
Large  
Scaled

## Industrial Production from A to Z

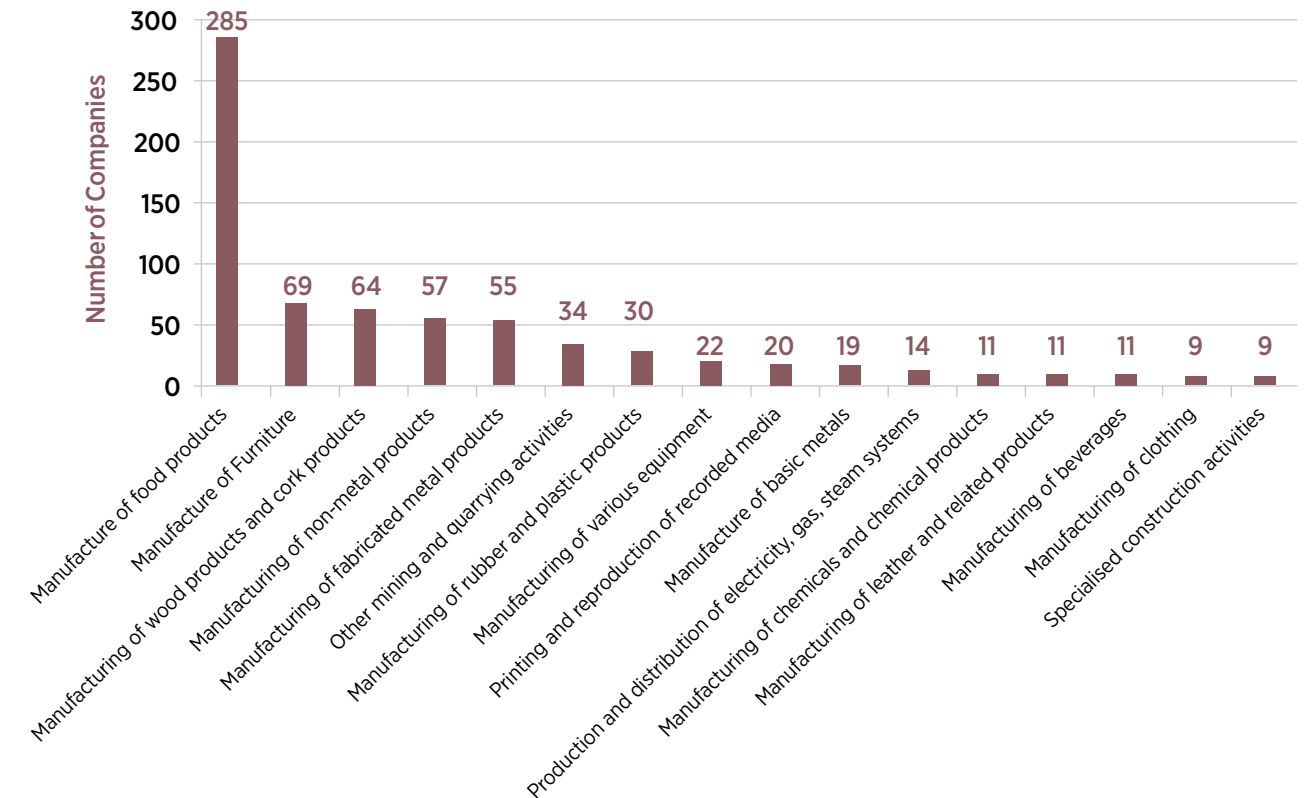
Çanakkale is one of the most prominent provinces in Turkey in terms of diversity in industrial production.

Industrial enterprises in Çanakkale are engaged in high standard and quality production.

According to 2016 Industrial Registry System data, there are more than 700 enterprises in Çanakkale engaged in various industrial sectors, with the main areas of manufacturing being food products, furniture, wood and cork products, non-metal products and fabricated metal products.

The district of Biga, which is the most developed district in the region, has the largest number of enterprises according to the TOBB (The Union of Chambers and Commodity Exchanges of Turkey) Industry Database.

### Production and Manufacturing Diversity in Çanakkale





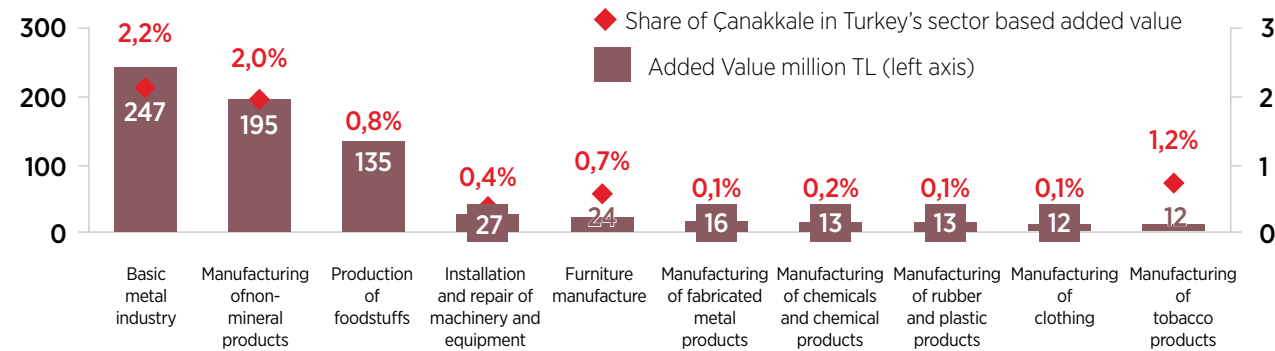
## Value Added Sectors

The sectors providing the most added value in Çanakkale are the basic metal sector, and those producing non-metal mineral products and foods.

### Top 10 Sectors providing the most Added Value in Çanakkale, 2014\*

1. Manufacturing of basic metals
2. Manufacture of other non-metallic mineral products
3. Manufacture of food products
4. Installation and repair of machinery and equipment
5. Manufacture of furniture
6. Manufacturing of fabricated metal products
7. Manufacturing of chemicals and chemical products
8. Manufacturing of rubber and plastic products
9. Manufacturing of clothing
10. Manufacture of tobacco products

### Share of Çanakkale's Top 10 Sectors Providing the most Added Value in All Across Turkey, 2014\*



\* TR22 South Marmara Region Manufacturing Industry Strategy and Action Plan

## Sectoral Distribution and Employment in Çanakkale

Some 65 percent of Çanakkale's total employment in the production sector consists of those employed in the food, non-metallic product and basic metal sectors.

### Sectoral Distribution of Manufacturing in Çanakkale, 2014\*

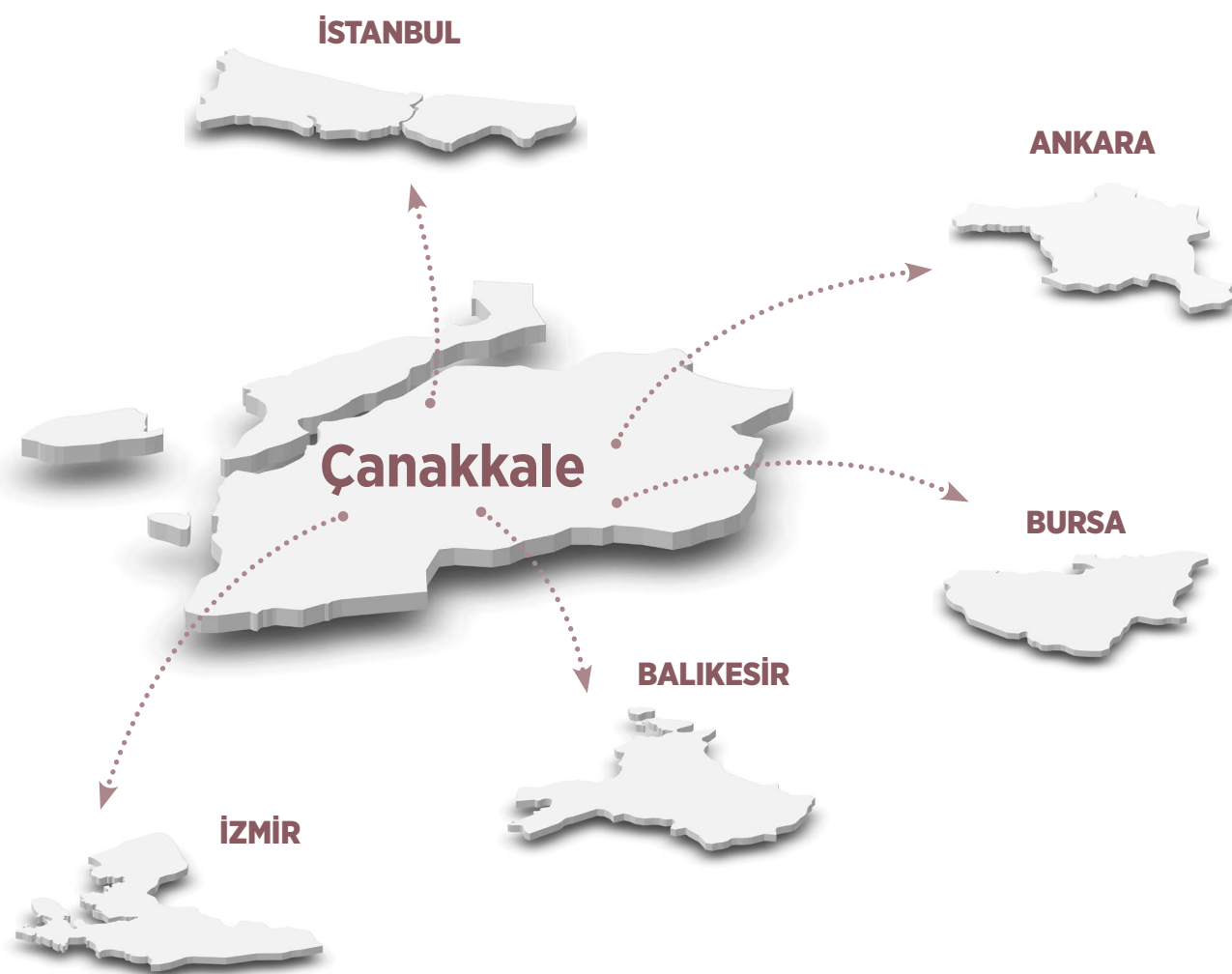
Sector Name	Number of Employees
Manufacture of food products	3,840
Manufacture of other non-metallic mineral products	3,156
Basic metal industry	2,715
Manufacture of furniture	1,378
Installation and repair of machinery and equipment	842
Manufacture of wearing apparel	672
Manufacture of fabricated metal products (except machinery and equipment)	642
Manufacturing of wood, wood products and cork products (except furniture); manufacturing of items knitted by using straw and similar materials	510
Manufacturing of rubber and plastic products	313
Manufacturing of various machinery and equipment	175
Printing and reproduction of recorded media	158
Manufacturing of chemicals and chemical products	101
Manufacture of other transport equipment	89
Manufacture of leather and related products	78
Manufacturing of beverages	75
Manufacture of textiles	43
Other production and manufacturing activities	42
Manufacture of tobacco products	41
Manufacture of motor vehicles, trailers and semi-trailers	34
Manufacture of coke and refined petroleum products	28
Manufacture of paper and paper products	25
Manufacture of computer, electronic and optical products	23
Manufacture of electrical equipment	18

\* TR22 South Marmara Region Manufacturing Industry Strategy and Action Plan



## Basic Production Relations of Çanakkale with other Provinces

In terms of trading, İstanbul is Çanakkale's biggest trading partner, with İzmir, Bursa, Balıkesir and Ankara being other prominent provinces in the region's commercial relations.



## Pioneer in agriculture based industry

The agriculture sector is one of the most privileged sectors in Çanakkale in terms of its effect on employment, pioneering in vegetable production along with its branded products, and the added value it creates. Many agricultural products needed by agriculture-based industries are grown in the broad fertile lands of Çanakkale.

Considering the diversity of products, Çanakkale offers many opportunities for investors in the field of agriculture-based industry, and this has fostered an intensity of food industry investments in Çanakkale.

The production of food products is one of the sectors with the highest added value in Çanakkale, and is one of the sectors that stands out in terms of the number of employees.

### Localized Food Sub-Sectors in Çanakkale, 2014\*

Food Sub-Sectors	Number of Employees
Production of bread, fresh pastry products and fresh cakes	1.039
Processing and storage of fish, shellfish and mollusks	890
Dairy operation and cheese production	714
Production of oil and fat	291
Processing and storage of various fruits and vegetables	215
Production of ground cereals and vegetables	209
Manufacturing of ready-made feed for farm animals	116
Production of grape wine	68
Production of meat products from livestock and poultry	56
Ice cream production	33
Production of spices, sauces, vinegar and other condiments	29

\* TR22 South Marmara Region Manufacturing Industry Strategy and Action Plan





## Prominent Sub-Sectors for the Production of Food and Beverages in Districts of Çanakkale\*

### Ayvaci

- Production of oil and fat
- Dairy operations and cheese production
- Production of grape wine
- Ice cream production
- Production of ground cereals and vegetables
- Production of bread, fresh pastry products and fresh cakes
- Production of meat products from livestock and poultry
- Production of pasta, noodle, couscous and similar products

### Bayramiç

- Dairy operations and cheese production
- Production of oil and fat
- Production of cocoa, chocolate and confectionery
- Production of ground cereals and vegetables
- Production of bread, fresh pastry products and fresh cakes
- Processing and storage of fish, shellfish and mollusks

### Biga

- Production of ground cereals and vegetables
- Dairy operations and cheese production
- Processing and storage of various fruits and vegetables
- Production of meat products from livestock and poultry
- Meat processing and storage

- Production of grape wine
- Production of meat products from livestock and poultry
- Production of bread, fresh pastry products and fresh cakes
- Processing and storage of various fruits and vegetables

### Çan

- Meat processing and storage

### Bozcaada

\* TR22 South Marmara Region Manufacturing Industry Strategy and Action Plan



## Prominent Sub-Sectors in the Production of Food and Beverages in Districts of Çanakkale

- Processing and storage of fish, shellfish and mollusks
- Ice cream production
- Production of bread, fresh pastry products and fresh cakes
- Production of rusks and biscuits; production of durable pastry products and cakes
- Processing and storage of various fruits and vegetables
- Production of oil and fat
- Dairy operations and cheese production



**Çanakkale  
Central District**

- Production of grape wine
- Production of spices, sauces, vinegar and other condiments
- Production of oil and fat
- Dairy operations and cheese production
- Processing of fish, shellfish and mollusks
- Production of bread, fresh pastry products and fresh cakes

- Production of oil and fat
- Dairy operations and cheese production
- Production of meat products from livestock and poultry
- Production of grape wine
- Meat processing and storage
- Production of bread, fresh pastry products and fresh cakes



**Gelibolu**

- Production of oil and fat
- Production of grape wine
- Production of bread, fresh pastry products and fresh cakes
- Meat processing and storage



**Ezine**

- Processing of fish, shellfish and mollusks
- Ice cream production
- Production of grape wine
- Potato processing and storage
- Production of ground cereals and vegetables
- Production of oil and fat
- Production of meat products from livestock and poultry
- Production of bread, fresh pastry products and fresh cakes



**Gökçeada**

## Prominent Sub-Sectors for Production of Food and Beverage in Districts of Çanakkale

### Lapseki

- Processing and storage of fish, shellfish and mollusks
- Production of ground cereals and vegetables
- Dairy operations and cheese production
- Production of oil and fat
- Production of bread, fresh pastry products and fresh cakes
- Production of meat products from livestock and poultry

### Yenice

- Production of spices, sauces, vinegar and other condiments
- Dairy operations and cheese production
- Processing and storage of various fruits and vegetables
- Production of ground cereals and vegetables
- Production of rusks and biscuits; production of durable pastry products and cakes
- Production of bread, fresh pastry products and fresh cakes

## High Added Value in the Manufacture of Non-Metal Mineral Products

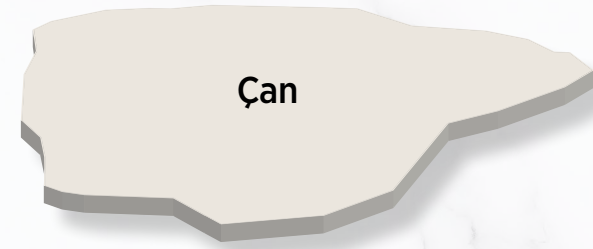
The manufacturing of non-metal mineral products is one of the sectors with the highest added value in Çanakkale, and it also stands out in terms of the number of employees.

Çanakkale produces 2 percent of the added value among other provinces in Turkey.

Ceramics, as part of the non-metal mineral product sector, are among Çanakkale's most exported products.



## Prominent Sub-Sectors for Manufacturing of Other Non-metallic Mineral Products in Districts of Çanakkale\*



- Manufacturing of ceramic sanitary equipment
- Manufacturing of products made of concrete, gypsum and cement
- Cutting, shaping and finishing of stone and marble

- Manufacturing of ready-mixed concrete
- Manufacturing of concrete products for construction
- Manufacturing of bricks made of kiln-dried clay, tile and construction materials
- Manufacturing of ceramic household goods and ornaments
- Manufacturing of flat glass
- Manufacturing of cement
- Cutting, shaping and finishing of stone and marble



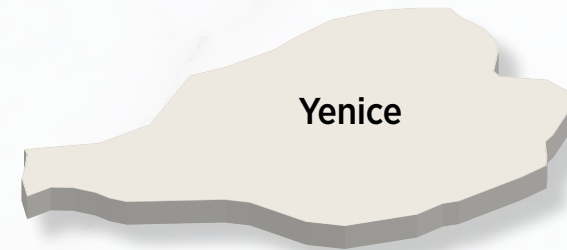
- Manufacturing of ceramic household goods and ornaments
- Manufacturing of concrete products for construction



- Manufacturing of cement
- Manufacturing of ready-mixed concrete
- Manufacturing of lime and gypsum



- Cutting, shaping and finishing of stone and marble



- Manufacturing of ready-mixed concrete
- Cutting, shaping and finishing of stone and marble



- Manufacturing of ready-mixed concrete

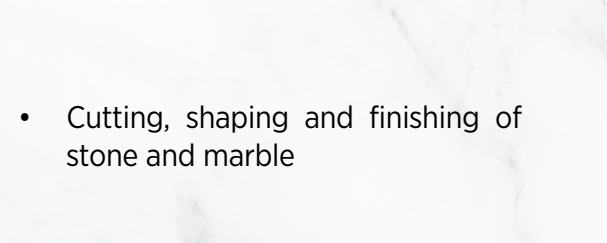
\* TR22 South Marmara Region Manufacturing Industry Strategy and Action Plan



## Prominent Sub-Sectors for Manufacturing of Other Non-metallic Mineral Products in Districts of Çanakkale



- Cutting, shaping and finishing of stone and marble



- Cutting, shaping and finishing of stone and marble



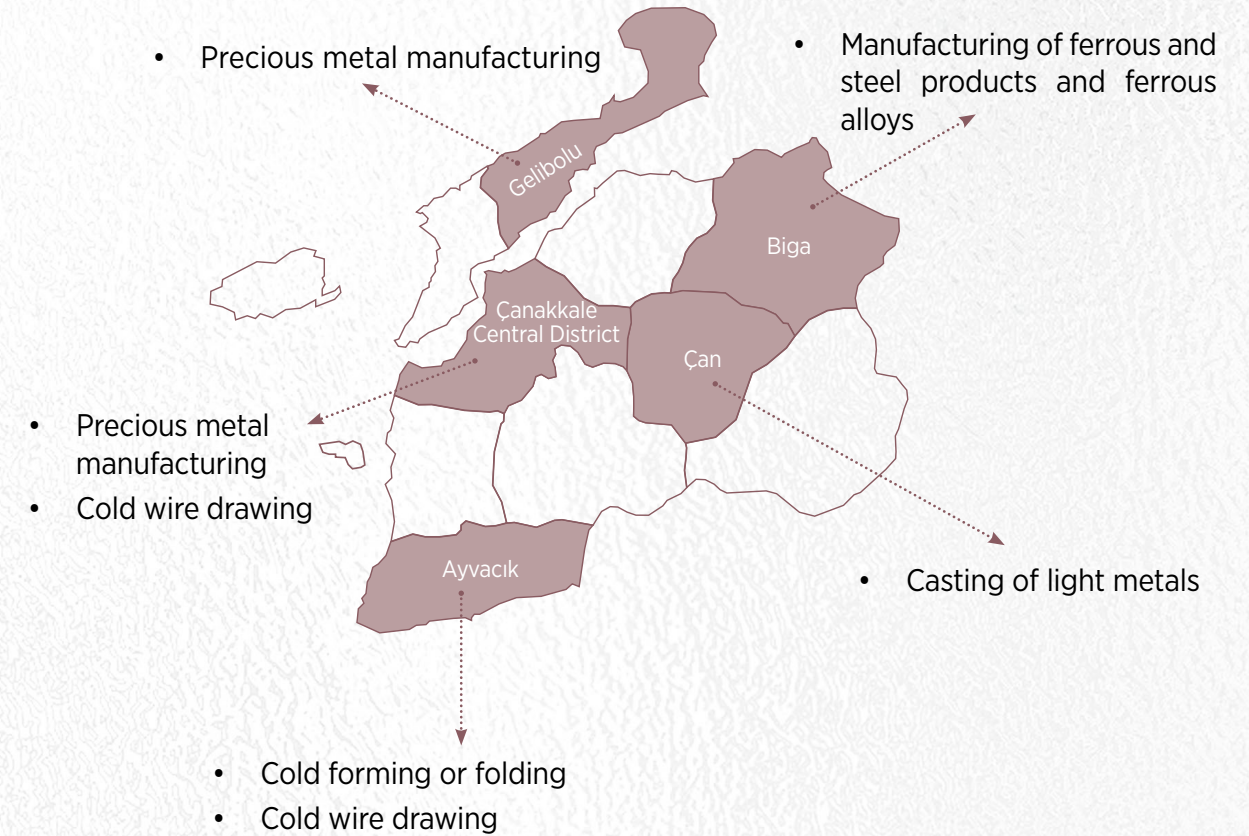
- Manufacturing of lime and gypsum
- Manufacturing and processing of other glass (including technical purpose glassware)
- Manufacturing of ready-mixed concrete
- Manufacturing of ceramic tiles and paving stones

## Basic metal Industry

Some 18 percent of the added value generated in Çanakkale as a result of manufacturing activities comes from basic metal manufacturing, and Çanakkale generates the 2.2 percent of the overall added value across Turkey.

The basic metal sector is among the most important in the province in terms of added value and employment opportunities, with the Biga district being one of the leading districts in this regard.

### Prominent Base metal Industry Sub-Sectors in Districts of Çanakkale\*



\* TR22 South Marmara Region Manufacturing Industry Strategy and Action Plan

## Furniture Manufacturing

According to the Industrial Registry Information System, furniture manufacturing ranks second to food production in terms of the number of companies in Çanakkale in 2016.

The manufacturing of furniture is among the most important sectors of the province in terms of added value and employment opportunities, and the Biga district is one of the leading districts in this regard.

### Prominent Furniture Manufacturing Sub-Sectors in Districts of Çanakkale\*

- Manufacturing of office and store furniture
- Manufacturing of other furniture
- Manufacturing of kitchen furniture
- Manufacturing of other furniture
- Manufacturing of kitchen furniture
- Manufacturing of office and store furniture
- Manufacturing of other furniture

\* TR22 South Marmara Region Manufacturing Industry Strategy and Action Plan

## Çanakkale Grows with Organized Industrial Zones

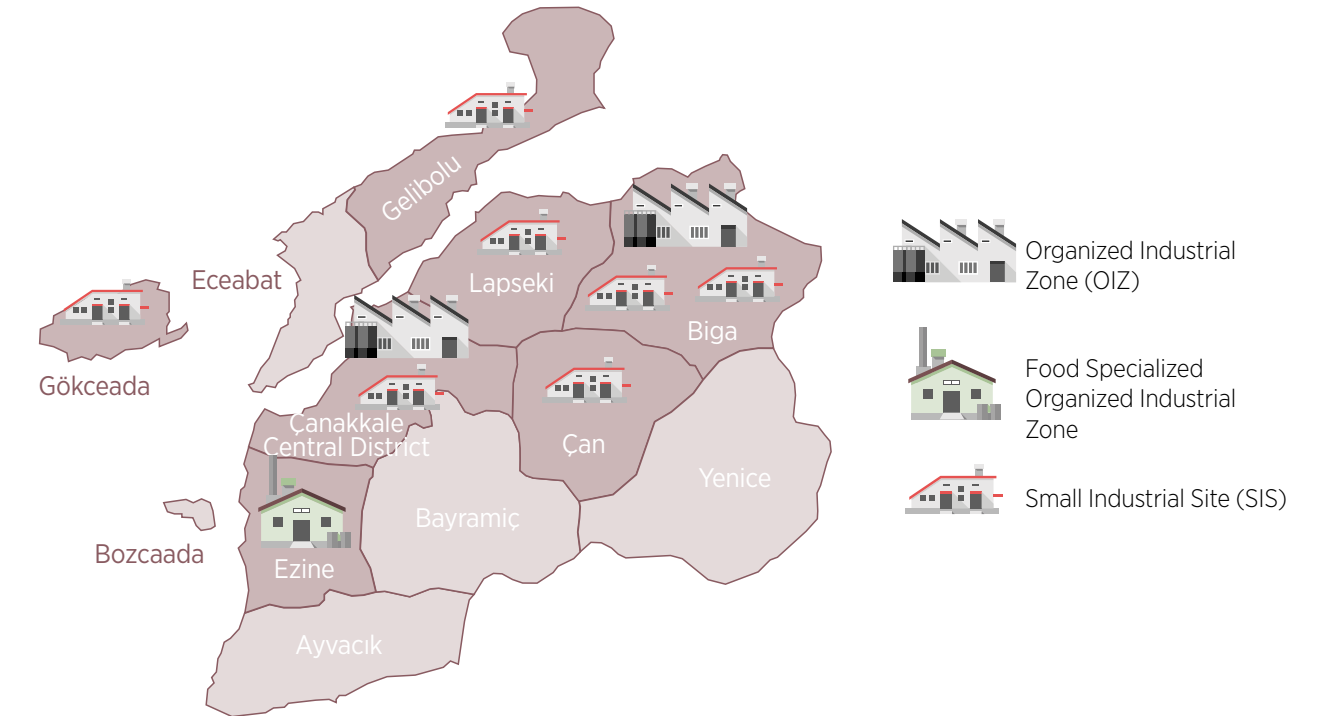
There are two Organized Industrial Zones (OIZs) in Çanakkale, one in the Biga district and the other in Çanakkale Central District. A Food Specialized OIZ that is planned to be established in Ezine district has gained a legal personality and infrastructure works are continuing.

Çanakkale offers an advantageous investment environment for investors thanks to its OIZ infrastructure.

The total number of parcels in the two OIZs in the province is 113, with 61 in the Çanakkale OIZ and 52 in the Biga OIZ.

Aside from the Ezine Food Specialized Organized Industrial Zone, all the other OIZs have a combined industrial zone status.

There are a total of seven small industrial sites in the province, two in Biga, and one each in Center, Çan, Gelibolu, Gökçeada and Lapseki. The process to establish a new small industrial site in the Ezine district is still ongoing.







## Çanakkale Organized Industrial Zone

Established in 2001, the Çanakkale OIZ offers different logistical advantages such as highway, airway and maritime transportation as well as hosting companies which are working in particularly food industry along with the forestry and wood and plastic products industries.

Infrastructure services such as electricity, water, natural gas and roads, have been completed in the Çanakkale OIZ.

### Çanakkale OIZ Transportation Information

#### Nearest Road



Bursa  
Highway  
0 km

#### Nearest Railway



Bandırma  
160 km

#### Nearest Centrum



Çanakkale

#### Nearest Port



Kepez  
Port  
10 km

#### Nearest Airport



Çanakkale  
Airport  
7 km

#### Nearest District Center



Çanakkale  
Center



## Biga Organized Industrial Zone

The Biga OIZ was established in 1995 on 91.2 hectares, and is home mainly to companies working in food production and the manufacture of ferrous and steel products.

Infrastructure services such as electricity, water, treatment plant and roads have been completed in the Biga OIZ.

### Biga OIZ Transportation Information

#### Nearest Road



Bursa-Çanakkale  
Highway  
0,2 km

#### Nearest Railway



Bandırma  
85 km

#### Nearest Centrum



Çanakkale

#### Nearest Port



İÇDAŞ  
Port  
15 km

#### Nearest Airport



Çanakkale  
Airport  
70 km

#### Nearest District Center

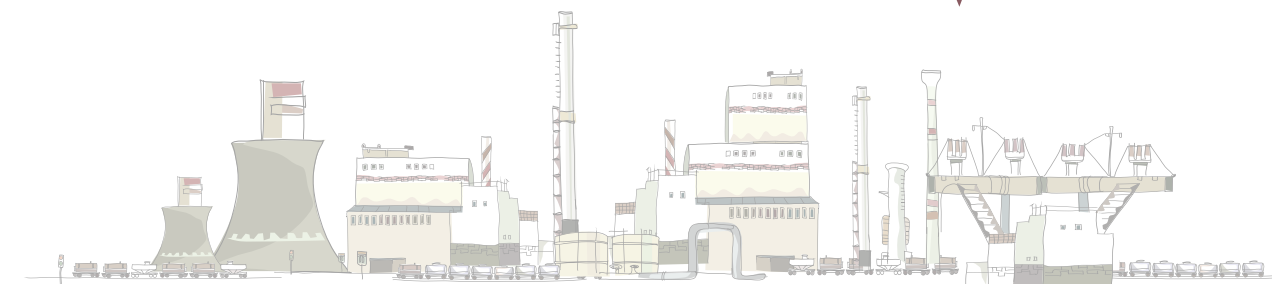


Biga

#### Nearest Residential Area



Balıklıçeşme  
Town





## Ezine Food Specialized Organized Industrial Zone

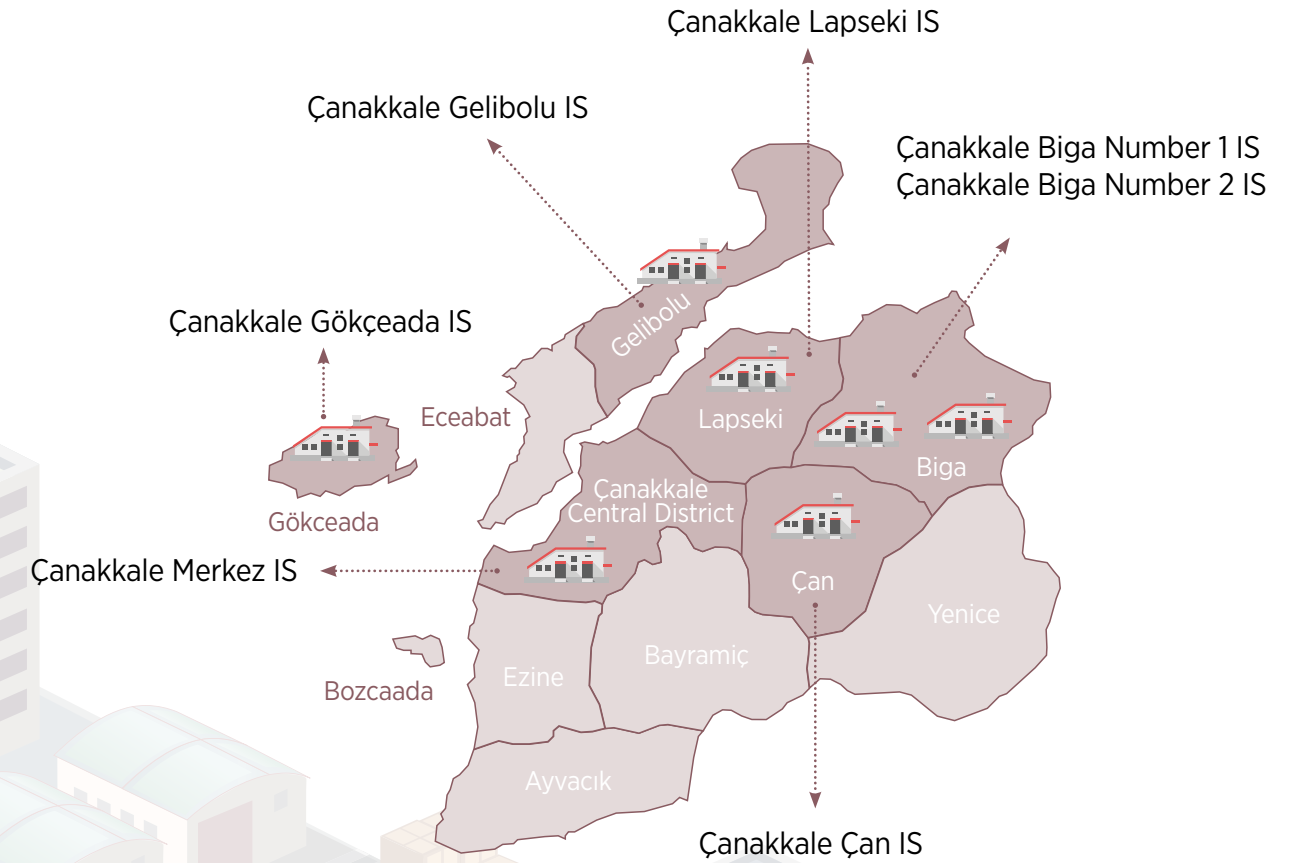
The Ezine Food Specialized Organized Industrial Zone covers an area of around 136 hectares, and brings together food sector producers working mainly in the milk and dairy products, olive and olive oil sectors. The OIZ has gained a legal personality and now offers an advantageous investment environment to potential investors.



## Small Industrial Sites in Çanakkale

There are a total of seven small industrial sites in the province, two in Biga, and one each in Center, Çan, Gelibolu, Gökçeada and Lapseki. The process to establish a new industrial site in the Ezine district is ongoing.

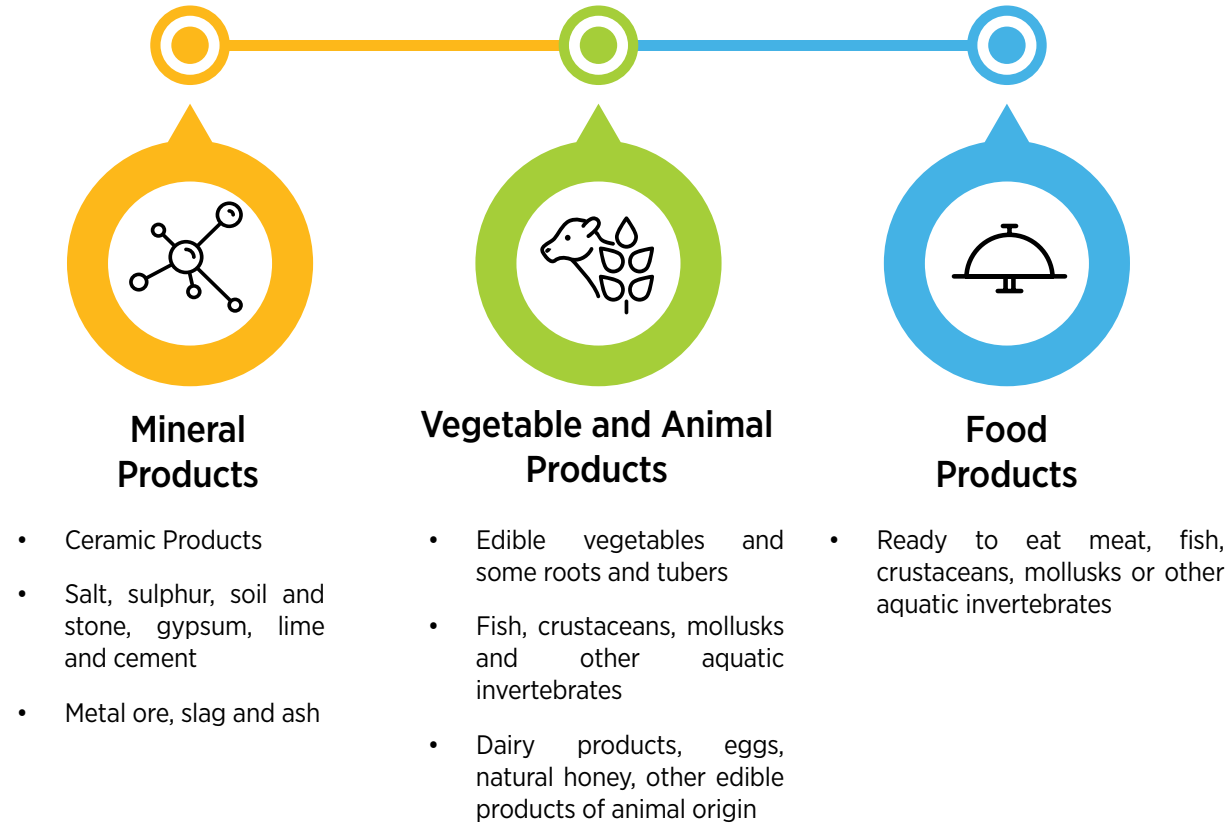
### Small Industrial Sites in Çanakkale



## Sectors in which Çanakkale has a Competitive Advantage in Exports

The areas in which Çanakkale has a competitive advantage in exports are mineral products, vegetable and animal products and food products.\*

### Çanakkale



\* TR22 South Marmara Region Foreign Trade Strategy and Action Plan

## University Industry Collaboration

### A New Innovation Hub: Çanakkale Technopark

Areas where companies using or working on the production of high/advanced technologies, and where technology/software is developed and produced using the means provided by universities, institutes or R&D centers and trading the end-product are called technoparks/technocities.

The Çanakkale Technology Development Zone was established in 2012 and started operation in 2014.

Çanakkale Technopark offers a number of advantages to companies operating in the technopark in the form of various state subsidies, and is awaiting new entrepreneur firms.

### Public-University-Industry Collaboration

The Public-University-Industry Collaboration (PUIC) Board was established to strengthen collaborations between the public, academia and industry, and to assist industries in the province in becoming highly competitive, generating added value and producing high technologies that can contribute to innovation as part of a sustainable structure. The Board is involved in the coordination of the steering activities for the development of an innovation ecosystem in Çanakkale.

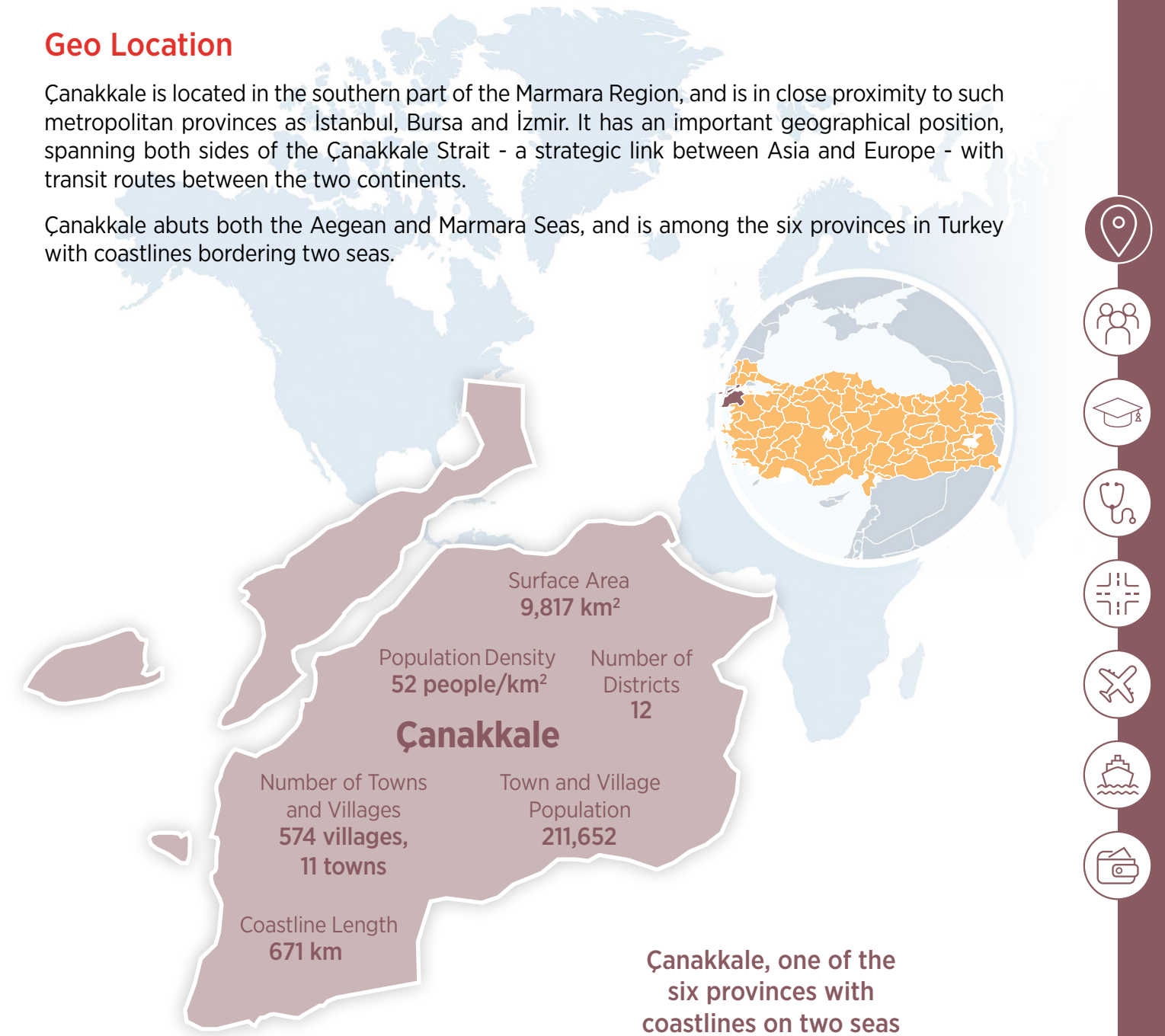


# ÇANAKKALE AT A GLANCE

## Geo Location

Çanakkale is located in the southern part of the Marmara Region, and is in close proximity to such metropolitan provinces as İstanbul, Bursa and İzmir. It has an important geographical position, spanning both sides of the Çanakkale Strait - a strategic link between Asia and Europe - with transit routes between the two continents.

Çanakkale abuts both the Aegean and Marmara Seas, and is among the six provinces in Turkey with coastlines bordering two seas.





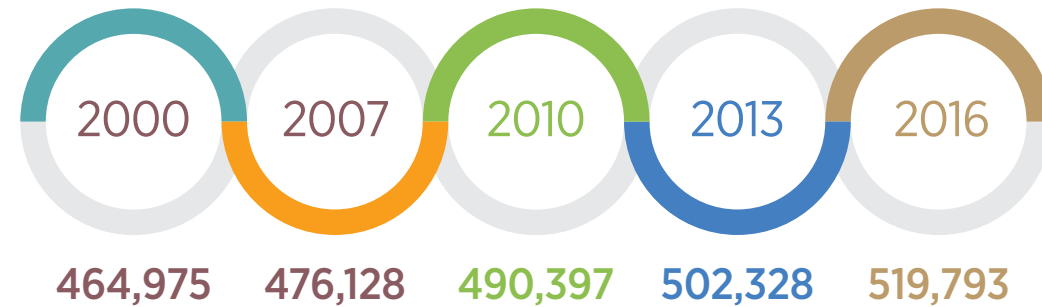
## Population Dynamics

According to 2016 data, Çanakkale has a population of 519,793, constituting 0.65 percent of Turkey's population.

Estimated  
2040 Population  
**836,290** people

Labor Force  
Participation Rate (2016)  
**48.6%**

Employment Rate (2016)  
**45.3%**



## Education in Çanakkale

Thanks to its educational infrastructure, Çanakkale has the necessary workforce and qualified human resources required by many sectors.



Çanakkale  
Onsekiz Mart  
University

With a student population exceeding  
50,000, a **University City Çanakkale**

14 faculties

8 colleges

13 vocational schools

4 institutes

32 research and application centers

More than 350 educational institutions  
operate in Çanakkale

### Schooling Rates

Elementary School  
Schooling Rate  
**90%**

Junior High School  
Schooling Rate  
**95%**

High School  
Schooling Rate  
**88%**

## A New Innovation Hub: Çanakkale



**ÇOMÜ TECHNOPARK** expands new horizons  
in R&D and innovation in Çanakkale



ÇOMÜ Technopark, development and innovation where  
value added products are introduced, and academic,  
economic and social structures are integrated, offering  
a variety of opportunities for investors.





## Health in Çanakkale

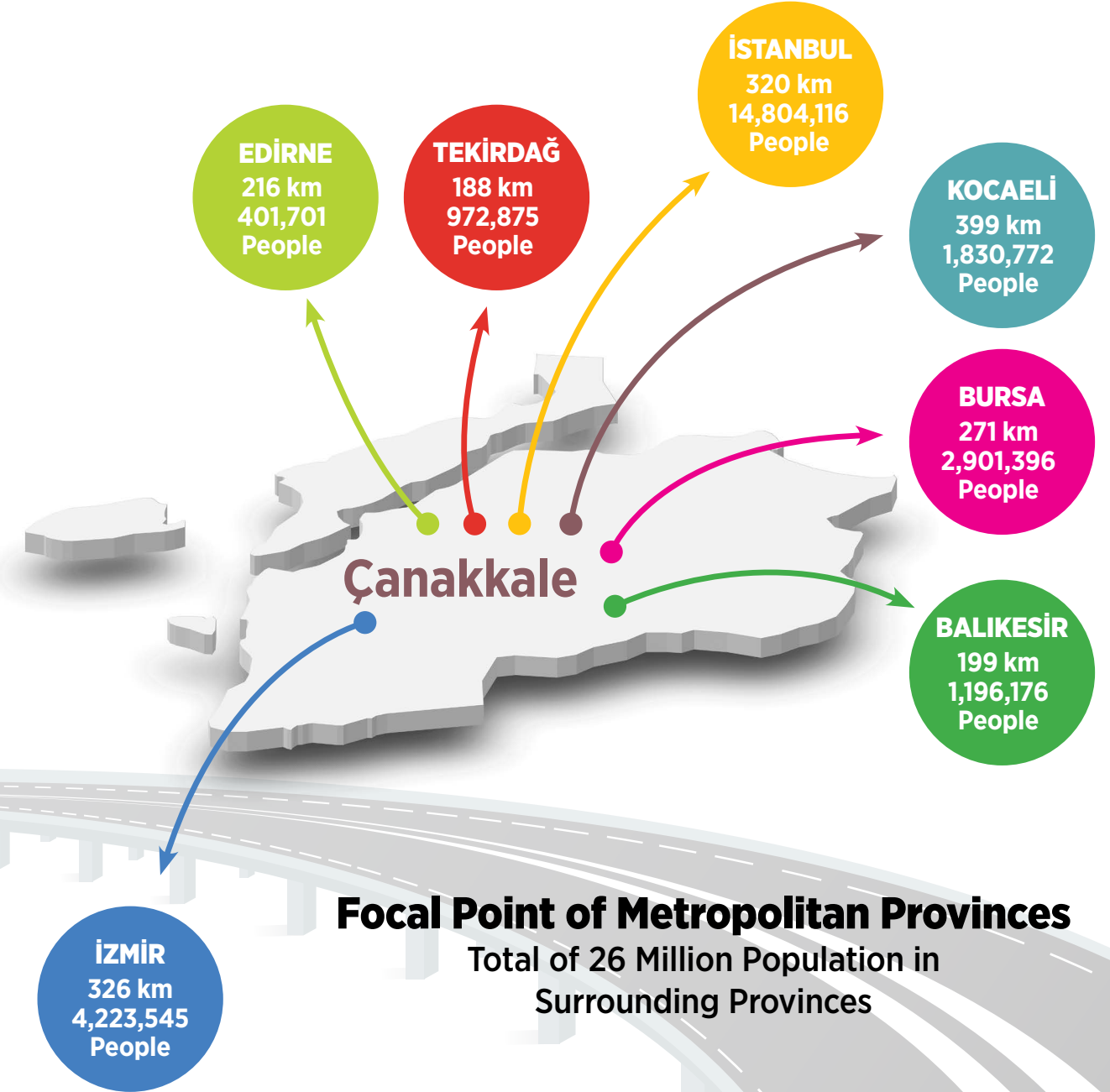
There are 9 state hospitals, 1 university hospital, 2 private hospitals, 1 health center and 1 oral and dental hygiene center in Çanakkale.



\* Information accessed September 2017



## Distances by Provinces



## Focal Point of Metropolitan Provinces

Total of 26 Million Population in Surrounding Provinces



## Access Roads to Surrounding Provinces

### » Çanakkale - İstanbul Transportation

Çanakkale is accessible from İstanbul by air and land routes. The distance between Çanakkale and İstanbul is 320 km and flight duration is approximately 50 minutes.

After the completion of Kınalı-Tekirdağ-Çanakkale-Balıkesir Highway Project, which will provide a road link between Asia and Europe, the journey time between Çanakkale and İstanbul will be even shorter.

### » Çanakkale - İzmir Transportation

The highway distance between Çanakkale and İzmir is 326 km. Thanks to the Kınalı-Tekirdağ-Çanakkale-Balıkesir and Gebze-Orhangazi-İzmir Highway Projects, it is expected that transportation will be shortened in terms of both distance and time.

### » Çanakkale - Bursa Transportation

The highway distance between Çanakkale and Bursa is 271 km.

### » Çanakkale - Balıkesir Transportation

Transportation to Balıkesir, neighbouring Çanakkale, shares long borders and stretches to 199 km.

## Air Transport

### » Çanakkale Airport

Çanakkale Airport entered into service in 1995, and serves both domestic and international passengers in its new terminal building, which entered into service in 2017.

- 12,500 m<sup>2</sup> terminal building
- 2 aprons with a total capacity of 5 aircraft
- 14 counters
- Over 5,000 domestic and international flights
- More than 180,000 domestic and international passengers per year
- Accessible Airport
- Green Airport Certificate

### » Gökçeada Airport

Çanakkale Gökçeada Airport, which entered into service in 2010, is a civil aviation airport that serves domestic traffic.

- 1,200 m<sup>2</sup> terminal building
- 1 apron with a capacity of 3 aircraft
- 4 counters





## Maritime Transportation

Çanakkale has daily ferry routes. Ferry connection from Çanakkale centrum to both Kilitbahir and Eceabat is available. There are also ferry routes between Gelibolu and Lapseki, as well as between Lapseki and Çardak. Access to the islands of Gökçeada and Bozcaada is available via ferries which run at certain times of the day.

Loading and unloading services are available at Çanakkale Kepez Port and Karabiga Municipality Port.

### » Port of Kepez

- The port has two piers and a dock with a total berth length of 428 meters.
- All kinds of bulk cargo and general cargo handling services are provided.

### » Karabiga Municipality Port

- There are daily ferry lines between the Karabiga Municipality Port and Tekirdağ for freight transport. The port also offers loading and unloading services.

There are three private ports in Çanakkale: İÇDAŞ 1, İÇDAŞ 2 and Akçansa.

### » İÇDAŞ Ports

- İÇDAŞ 1 Port, with an overall berth length of 1,655 meters, features two piers and a dock. It has a capacity of 12 to 20 vessels depending on their size.
- The port of İÇDAŞ 2 has a berth length of 624 meters and a single pier.
- Port services include general cargo handling, container handling, liquid cargo handling, storage services, pilotage services and waste collection services.

### » Port of Akçansa

- The dock is 620 m in length, and is able to handle all types of bulk and general cargo.

# INCENTIVES



## Ministry of Economy

The Ministry of Economy provides support for investments in order to reduce regional development disparities, and aims to increase high added value investments through incentives. It aims also to improve production and employment figures, and to expand research and development activities that contribute to international competitiveness.

2<sup>nd</sup> Region incentives are applied for investments into the manufacturing sector in Çanakkale. Investments made in organized industrial zones are considered under 3<sup>rd</sup> region investments.

4<sup>th</sup> region incentives are applied for the manufacture of the products in the medium-high technology level.

Many sectors in manufacturing are regarded as preferred investment areas, and 5<sup>th</sup> region incentives are applied for them

6<sup>th</sup> region incentives are applied for the investments to be made on Bozcaada and Gökçeada.

### REGIONAL INCENTIVE IMPLEMENTATIONS

#### » Customs Duty Exemption

No customs duties are paid for imported machinery or equipment to be provided in the case of investments made by using the incentive.

#### » Social Security Premium Support (Employer's Share)

The Ministry shall pay the employer's national contributions that are due for additional employment falling within the scope of the incentive. The amount to be paid shall be a proportion of the minimum wage.

#### » Land Allocation

For investments made using an incentive certificate, land allocations are carried out free of charge in order to speed up the investment process in certain cases.

#### » VAT Exemption

No VAT is paid on machinery or equipment purchased as part of the investment to be made by using the incentive.

#### » Tax Reduction

Income and corporate tax are paid at discounted rates for a period of time, considering rates applicable for the invested regions within the scope of the incentive.

#### » Interest Rate Support

Interest rate discount support is provided on investment loans with a maturity of at least one year as part of the incentives to encourage regional investments.

## Ministry of Science, Industry and Technology

The following supports are provided so as to support and improve R&D, innovation and entrepreneurship enabling the industry to achieve a more competitive structure

### » Technopreneurship Capital Support

With the Technopreneurship Capital Support, young entrepreneurs with innovative business ideas are provided support for the stages of concept development, feasibility, laboratory work, design prototype production, pilot plant establishment, trial production and performing of type tests stages of their works.

### » Industry Thesis Project Support

Within the scope of the Industrial Thesis (SAN-TEZ) Program, the Ministry provides support to SMEs, allowing them to benefit from the university collaboration culture in their R&D and innovation related activities.

### » Technology Development Areas

Entrepreneurs, researchers and academicians who want to improve university-industry collaboration and to produce a new or advanced technology goods and services are provided incentives within the Technology Development Areas, allowing them to conduct industrial and commercial activities near to or around universities, and to benefit from the means of such universities.

### The incentives provided for Technology Development Areas are as follows;

Income and Corporate Tax Withholding Support, Insurance Premium Support, Support for Facilitating Employment of a Foreign National Employee, Staff Wage Tax Withholding Support, Waste Water Support, R&D Investment Support, VAT Exemption, Encouraging Foreign Investors, Supports Provided to Academicians



## The Scientific and Technological Research Council of Turkey (TUBITAK)

TÜBİTAK has a number of support programs to encourage the R&D studies of companies generating added value, and in this way, is increasing the R&D capabilities of Turkish industry. Grants are offered of up to 60 percent of the investment.

- Industry R&D Projects Support Program
- SME Start-Up Support Program for R&D
- Project Markets Support Program
- International Industry R&D Projects Support Program

## Small and Medium Size Enterprises Development Organization (KOSGEB)

KOSGEB offers various subsidies in support of small-and medium-sized enterprises.

These are provided in order to enable such enterprises to expand their investments, to increase the technology utilization rates and to improve their R&D capacities.

Offering grants and loan opportunities in different ratios depending on the type of the support, KOSGEB provides many advantages to investors in the region.

- Loan Interest Scheme
- Collaboration Cooperation Support Program
- General Support Scheme
- SME Project Support Scheme
- R&D, Innovation and Industrial Application Support Scheme
- Entrepreneurship Support Scheme
- Emerging Business Market SME Support Scheme
- Thematic Project Support Scheme
- Application Support Scheme





## Agriculture and Rural Development Support Institution (TKDK)

The Agriculture and Rural Development Support Institution provides supports to investors in particular fields in order to ensure the sustainable development of Turkey, to serve for the priority targets and to enable enterprises in the sector to meet EU standards. Financial contributions are provided from the co-financed funds of the European Union and the Republic of Turkey. Such investment supports are non-refundable.

### Supported Topics

- Milk, red meat, poultry meat and egg producing enterprises
- Milk, red meat, and poultry processing and marketing enterprises
- Vegetable producing and vegetable product, fruit and vegetable processing and marketing enterprises
- Bee products, processing and marketing enterprises
- Aquaculture and fishery products and processing enterprises
- Enterprises engaged in the production of ornamental plants, and medical and aromatic plants



## Support provided Ministry of Energy and Natural Resources

### » Productivity Enhancement Project Supports

The Ministry of Energy and Natural Resources provides support for projects that will decrease the use of energy by means of energy efficient equipment and systems, repair, insulation, modification, rehabilitation and process regulations.

### » Voluntary Agreement Supports

Support is provided to enterprises that commit to, and succeed in, decreasing energy density by at least 10 percent on average at the end of a three-year monitoring period based on the reference energy intensity, which is the average energy intensity over the past 5 years.





## Other Supports

### Industrial Development Bank of Turkey (TSKB)

The TSKB serves as an investment bank, providing investors with long-term credit facilities. The Bank also acts as an intermediary for in support of such funding agencies as the World Bank and the European Investment Bank. The amounts of fund support and credit support are dependent on the project field.

### European Investment Bank

The European Investment Bank offers advantageous credit facilities to SMEs.

### World Bank

Credits are offered to companies to encourage them to start exporting their products, with the aim being to raise export figures.

### Credit Guarantee Fund

The Credit Guarantee Fund aims to increase employment, improve export figures and reduce regional development disparities by reducing the high warranty payments of SMEs on bank credits. Enterprises seeking to benefit from the Credit Guarantee Fund can proceed by filing in an application to their partnering bank.





## South Marmara Development Agency

South Marmara Development Agency provides grants to SMEs, registered in Balıkesir and Çanakkale, to help them improve their competitiveness.

In a Project Call for Proposals, a SME can submit project proposals in accordance with the subjects and conditions set for the program as part of a specific support program. For the support programs that can be applied during certain periods of the year, SME support has been given to develop the industry based on agriculture and to improve the innovation and export capacities of enterprises until now. The subject and sectors to be supported may change every year for each specific program.

The submitted projects are then ranked according to the points received, and become eligible for grants depending on the program budget. Successful projects are given a grant of 50 percent. A portion of the grants is prepaid to firms in advance to help overcome initial financing problems. Further information on the active grant programs that you can apply for and current information on all grant programs is available at [www.gmka.gov.tr/destekler](http://www.gmka.gov.tr/destekler).



## South Marmara Development Agency is on your side with its Çanakkale Investment Support Office

South Marmara Development Agency Çanakkale Investment Support Office's mission is to improve the provincial investment climate, to attract investment by promoting the investment environment through different channels and approaches, and to support investors throughout their investment process.

### Çanakkale Investment Support Office operations include:

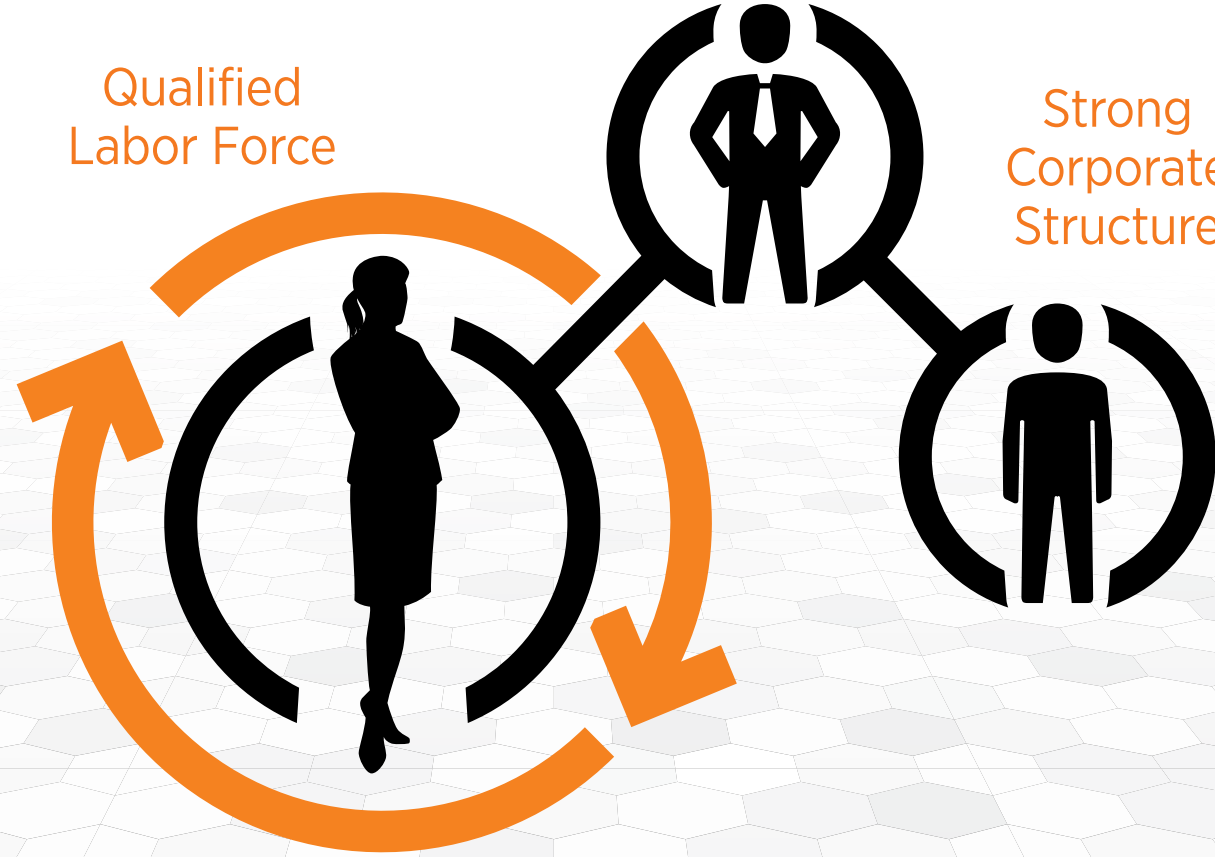
- Providing information to investors on a variety of issues,
- Preparing analyses, reports and inventory studies related to the business and investment climate of the province, and sharing the results with investors,
- Supporting investors in finding suitable land for investment,
- Supporting the follow-up of investment permits and licenses,
- Organizing promotional events related to the investment environment,
- Developing and implementing strategies to improve the business and investment climate in the province, and developing collaborations between institutions and investors.



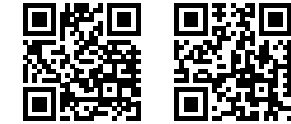
Strong B2B  
Communication  
Network

Qualified  
Labor Force

Strong  
Corporate  
Structure



Invest in Çanakkale



[www.investincanakkale.com](http://www.investincanakkale.com)  
[www.gmka.gov.tr](http://www.gmka.gov.tr)



# ÇANAKKALE INDUSTRIAL INVESTMENT GUIDE

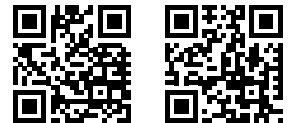


## Çanakkale Investment Support Office

Cevatpaşa Mahallesi  
Kayserili Ahmet Paşa Cad.  
Eski İl Özel İdare Binası  
3.Kat No:26 Valilik Yanı  
Merkez-Çanakkale/TURKEY  
T: +90 286 211 00 81  
F: +90 286 211 00 82  
E: cydo@gmka.gov.tr  
info@gmka.gov.tr

## South Marmara Development Agency Balıkesir Main Office

Paşaalanı Mahallesi  
A. Gaffar Okkan Cad. No:36/A  
Karesi-Balıkesir/TURKEY  
T: +90 266 246 10 00  
F: +90 266 246 17 00  
E: info@gmka.gov.tr



[www.investincanakkale.com](http://www.investincanakkale.com)  
[www.gmka.gov.tr](http://www.gmka.gov.tr)